

MARQUIS ELITE ENVIRONMENTS™

Exclusive to Marquis, Environments add functionality, versatility and amenity to your hot tub and surrounding spa area. They perfectly complement your Marquis hot tub, sharing the same color palette and design cues. Depending on which hot tub you select, a collection of steps, benches and storage benches may be combined to achieve a custom look. Some modules provide extra seating and dining surfaces, great for outdoor meals and entertaining.

Environments modules are heavy-weight and extra sturdy – no blowing away in a strong wind like plastic steps! You can create the ideal environment for your outdoor space and take it from hot tub to haven!

MARQUIS ELITE STANDARD FEATURES

Interior acrylic	All available acrylic colors
Synthetic exterior	Barnwood or Chestnut
Lighting	LED interior light
Cup holders	Yes
Head cushions	Yes
Controls	Revolution™ topside control
Century II Series Jets	Adjustable/interchangeable Stainless steel jet faces
Neck jets	Adjustable neck jets (not on Nashville Elite or Monaco Elite)
Water feature	Backlit pop-up waterfall feature
Insulation	Icynene® foam over plumbing
ConstantClean™	50 ft² filter (Nashville 35 ft²)
Cover	Black Weathershield™

MARQUIS ELITE OPTIONS & ACCESSORIES

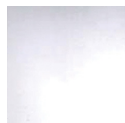
ConstantClean+	Advanced Plasma Gap CD Ozonator In-line sanitation system
Motown™ Audio w/BT	Optional audio expansion ports, RF control
LED lighting	Twilight™ LED interior/exterior lights
Insulation	Full foam
Performance upgrade	240V, 160 gpm pump upgrade Monaco Elite, Nashville Elite (USA only)
Two-pump upgrade	Broadway Elite
MicroSilk®	Not Monaco Elite or Broadway Elite 2-pump
Wireless connectivity	ControlMySpa™ module
Environments™	Marquis Elite steps and benches

MARQUIS SPAS 596 HOFFMAN RD, INDEPENDENCE, OR 97351 MARQUISSPAS.COM

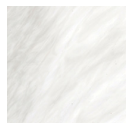
Every effort has been made to ensure the accuracy of this brochure. However, Marquis® reserves the right to improve its product without notice. This could create a variation between printed materials and the actual product you receive. Please see owner's manual for complete and accurate specifications, as well as consult with your Marquis Dealer prior to installation. We apologize for any inconvenience this may cause. ©Marquis Hot Tubs, LLC. 2/2023 USA 710-6712



INTERIOR COLORS



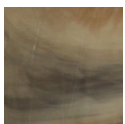
GLACIER



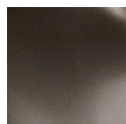
STERLING
SILVER



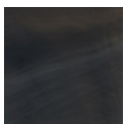
ALBA



TUSCAN
SUN

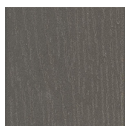


WINTER
SOLSTICE

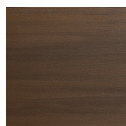


MIDNIGHT
CANYON

EXTERIOR COLORS



BARNWOOD



CHESTNUT

COVER COLORS



BLACK
WEATHERSHIELD



Marquis Elite is a modern classic, with all the features and benefits you expect to find in a top-quality brand, plus specialized systems unique to Marquis... at a surprising value.





“

[The Marquis] had better features than other brands, but the cost was still good. I have the Broadway and I absolutely love it. My biggest pro is how quiet the motor is. Second favorite pro is how clean the filter keeps the water. I haven't had to do much of anything.

Cody, Bakersfield, CA
via ConsumerAffairs.com



MARQUIS® ELITE HOT TUBS

For over 50 years, the hot tub industry has evolved an array of tried-and-true components and materials. Which means the top brands often rely on similar pumps, plumbing, jets, electronics and insulation. Even so, not all hot tub systems are created equal.

Marquis Elite hot tubs share many of the same components from the best suppliers. But Marquis engineers have designed a better system architecture, one that delivers quieter, more efficient operation and a better hydrotherapy experience. Compared to similarly-equipped hot tubs from the top brands, Marquis Elite offers a superior combination of performance and value. This includes three hallmark features we call the Big 3: High-flow therapy, ConstantClean™ water management and MicroSilk® skin, health and beauty treatment.

1 HIGH-FLOW THERAPY

By delivering as much water as possible at low pressure, Marquis hot tubs achieve deep muscle penetration without skin discomfort. Instead of feeling like pointy fingernails digging into your skin, causing an itching or burning sensation, Marquis high-flow therapy feels like the weighty palms of a skilled masseuse. All Marquis Elite hot tubs benefit from this elegant approach to hydrotherapy, with a variety of models and options.

As in all Marquis hot tubs, Marquis Elite hot tubs feature a perfectly-balanced water delivery system. Pumps, plumbing and jet configurations are designed to optimize available performance and ensure a superior hydrotherapy experience.

One- and two-pump models feature valves allowing water to be diverted to various jets throughout the hot tubs. The Broadway two-pump model activates jets by using the topside control panel. Either method of flow control is easy to understand and operate.

Century II jets feature interchangeable inserts to fine-tune your hydromassage experience, and additional inserts may be purchased for added personalization.

With a distinctive red nozzle and the potential to generate over 115 GPM (435 LPM) of water flow, the colossal Whitewater-4™ jet is yet another example of Marquis high-flow therapy innovation. Located in the footwell to enhance the benefits of leg and foot massage, this dynamic jet churns the water like a thunderous volcano. (Available on the Woodstock Elite, Vegas Elite and Hollywood Elite models.)

2 CONSTANTCLEAN+

The ConstantClean water management system is like having cruise control for your spa filtration. For up to four to six weeks you can set it and practically forget it. Depending on which Marquis hot tub you select, it comes with either a single-filter or dual-filter configuration.

ConstantClean employs a multistage filtration process to suction, trap and remove contaminants and particulates. Everything from sweat, skin oil and lotion, to skin cells, dirt and grit. SmartClean™ software automatically schedules a cleanup cycle after each hydrotherapy session. And when your hot tub is not in use, SmartClean schedules a one-hour filtration cycle twice per day. By integrating the filtration system with the spa's primary high-flow dual-speed pump, ConstantClean filters more water per day than other brands, and does so in one-tenth of the time.

An optional upgrade called ConstantClean+ adds two automated sanitation processes into the water management system: 1) ozonation with Mazzei® injection, and 2) in-line sanitation. This turns a five-stage process into a nine-stage process.

Adding in-line sanitation provides a dual-cartridge powerhouse. First, a mineral cartridge treats the water for up to four months. Second, a sanitizer cartridge gradually disperses either bromine or SmartChlor® over the course of four to six weeks. On average, you can expect to change out the mineral cartridge three times per year, and the sanitizer cartridge once per month.

3

MICROSILK® SKIN HEALTH AND BEAUTY TREATMENT

Using a Marquis hot tub with MicroSilk is like giving your entire body an oxygen facial. It moisturizes and hydrates at the same time, making your skin feel luxuriously silky and reducing the appearance of fine lines and wrinkles.

Microbubbles envelop your body in a soothing, effervescent cloud of oxygen. Dissolved oxygen at the skin surface stimulates better circulation and cellular respiration, which in turn leaves the skin glowing and radiant due to rapid skin cell regeneration.

Anti-aging benefits are perceivable. With real, tangible effects, no surgery and no recovery time, there are many reasons MicroSilk hydrotherapy is the anti-aging treatment of choice for the modern, sophisticated person. Instead of invasive medical procedures, your treatment happens as you soak away all the worries of the day in a luxurious Marquis hot tub with MicroSilk.

A MicroSilk bubble is approximately 50 to 100 times smaller than a



typical hot tub bubble. The bubbles created by MicroSilk are not only much smaller than regular hot tub bubbles, they are also negatively charged. Negatively- charged ions are believed to increase serotonin production in humans. Serotonin promotes restful sleep, and is responsible for emotional stability, a sense of well-being. Negatively- charged ions also help eliminate free radicals in the body. Free radicals are known to cause cellular damage, and are part of the degenerative process which causes premature aging.

Once impurities are removed from the skin, Marquis' proprietary ConstantClean™ water management with SmartClean™ technology quickly and effectively restores your water back to pristine condition after each MicroSilk treatment.

&

ELITE LUXURIES

The elegant Twilight™ option adds additional multipoint LED lighting to the spa interior, accent lights on the spa exterior, as well as variable color modes and transitions. Improve nighttime visibility, enhance the beauty of your spa, and supplement stress relief and relaxation.

Bring some soul to your Marquis Elite experience with optional Motown™ Audio! This builds an audio receiver into the hot tub exterior and twin speakers into the topside area, with a subwoofer concealed inside the frame. Features include: FM radio and Bluetooth connectivity for mobile devices (such as a smartphone, tablet or iPod®). Control the system from the receiver panel, or manage playback from a mobile device paired with Bluetooth. Play audio directly from your mobile device, or connect it to the internet using your wireless data plan or Wi-Fi network. Then, stream your favorite music, audiobooks, podcasts, internet radio and more! Optional add-ons include: a wireless RF remote control, and USB and 3.5mm auxiliary expansion ports for wired audio connection.

Are you ready to add some luxury to your life, and make an investment in your body and mental health? Visit marquisspas.com to learn more before you shop. Or drop by your local Marquis Dealer and discover the Marquis Elite lifestyle today.

MARQUIS
ELITE
HOT TUBS

“

We put the tub outside and it's very convenient. We use it a lot and I feel more relaxed. My wife takes care of the tub and it's quite simple. She has it down to a routine.

~Pat, Hillsdale, MI
via ConsumerAffairs.com

MARQUIS
The ULTIMATE Hot Tub Experience!





The Nashville Elite

	US/CA 60HZ	INTL 50HZ
Size	60 x 84 x 29.5 in	152 x 213 x 75 cm
Weight dry/full	400/2,026 lb	181/919 kg
Massage seats	3	3
Water capacity	225 Gal	852 L
Therapy jets	22	22
Jet pump	(1) 2-sp = 120 GPM*	(1) 2-sp = 606 LPM
Electrical	120V 15A	230V 1 x 16A or 3ph
Performance upgrade**	240V 30 or 50A	230V 1 x 32A or 3ph

*Canada 454LPM, 60 HZ, **USA only

The Nashville Elite offers the luxury of a day spa in your backyard for up to three people. Lie back in the lounge or whisper to your partner in the therapy seat next to you, and an additional therapy seat provides another spot to relax. Enjoy the convenience of plug and play, or the optional 240V performance upgrade to enhance your therapy experience.

The Monaco Elite

	US/CA 60HZ	INTL 50HZ
Size	80 dia x 36 in	203 dia x 91 cm
Weight dry/full	500/2,590 lb	227/ 1175 kg
Massage seats	5	5
Water capacity	250 Gal	946 L
Therapy jets	23	23
Jet pumps	(1) 2-sp = 120 GPM*(1)	2-sp = 606 LPM
Electrical	120V 15A	230V 1 x 16A or 3ph
Performance upgrade**	240V 30 or 50A	230V 1 x 32 or 3ph

*Canada 454LPM, 60 HZ, **USA only

The Monaco Elite accommodates a group of five. This throwback to the classic round hot tub has a generous lounge (not found in other round hot tubs) with jets from shoulders to legs, two deep therapy seats with full-back therapy, one bucket seat and a high therapy seat. Plug in to a household outlet, or optional 240V performance upgrade enhances your therapy experience.

The Broadway Elite

	US/CA 60HZ	INTL 50HZ
Size	77 x 77 x 36 in	196 x 196 x 91 cm
Weight dry/full	530/3,115 lb	241/1413 kg
Massage seats	5	5
Water capacity	310 Gal	1173 L
Therapy jets	30	30
Jet pumps	(1) 2-sp = 160 GPM	(1) 2-sp = 606 LPM
Pump upgrade	(2) 2-sp = 320 GPM*	(2) 2-sp = 1211 LPM*
Electrical	240V 30 or 50A	230V 1 x 16A or 3ph 230V 1 x 32A or 3ph

The Broadway Elite features a therapy lounge with neck-to-ankle jets, a super-deep Director's Chair with fantastic leg therapy, another deep seat for total back therapy and two more seats at varying heights. The optional two-pump upgrade increases jet power and enhances your therapy experience. A night in this hot tub is better than any night on the town!

*MicroSilk not available on Broadway Elite 2-pump



The Hollywood Elite

	US/CA 60HZ	INTL 50HZ
Size	84 x 84 x 36 in	213 x 213 x 91 cm
Weight dry/full	740/3,659 lb	336/1,660 kg
Massage seats	6	6
Water capacity	350 Gal	1325 L
Therapy jets	41	41
Jet pumps	(2) 2-sp = 320 GPM	(2) 2-sp = 1211 LPM
Electrical	240V 30 or 50A	230V 1 x 32A or 3ph

The Hollywood Elite accommodates a party of six. The generous seating includes a Laid Back Lounge with jets from neck to feet, two deep therapy seats with full-back therapy, two bucket seats and a high therapy/cooldown seat. Plus, an exhilarating Whitewater-4™ jet will rock your world with true rock star treatment!

The Vegas Elite

	US/CA 60HZ	INTL 50HZ
Size	84 x 84 x 36 in	213 x 213 x 91 cm
Weight dry/full	700/3,873 lb	318/1,757 kg
Massage seats	6	6
Water capacity	380 Gal	1438 L
Therapy jets	41	41
Jet pumps	(2) 2-sp = 320 GPM	(2) 2-sp = 1211 LPM
Electrical	240V 30 or 50A	230V 1 x 32A or 3ph

The Vegas Elite hot tub's unique seating positions provide comfort for six people and include two deep therapy seats, three side seats, one mid-level seat, and a super soak seat. Feel the Whitewater-4 jet's water wall from any position - its explosive leg therapy is absolutely thrilling! Plus, what happens in Vegas, stays in Vegas.

The Woodstock Elite

	US/CA 60HZ	INTL 50HZ
Size	90 x 90 x 36 in	229 x 229 x 91 cm
Weight dry/full	780/4,621 lb	354/2,096 kg
Massage seats	7	7
Water capacity	460 Gal	1741 L
Therapy jets	51	51
Jet pumps	(2) 2-sp = 320 GPM	(2) 2-sp = 1211 LPM
Electrical	240V 30 or 50A	230V 1 x 32A or 3ph

The Woodstock Elite is party central with seven seats for seven attendees. The lounge features epic hydrotherapy from neck to feet. A super-deep therapy seat massages thighs and calves, plus five more comfy positions allow for total relaxation. But the star of the show is the Whitewater-4 jets' water wall, blasting the entire party with exciting therapy!